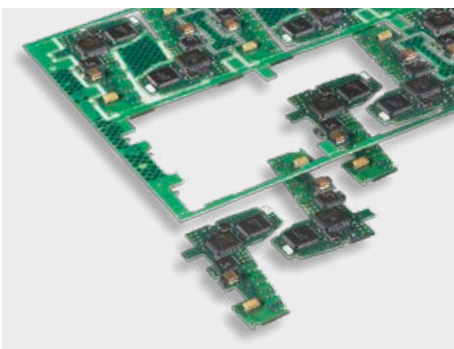
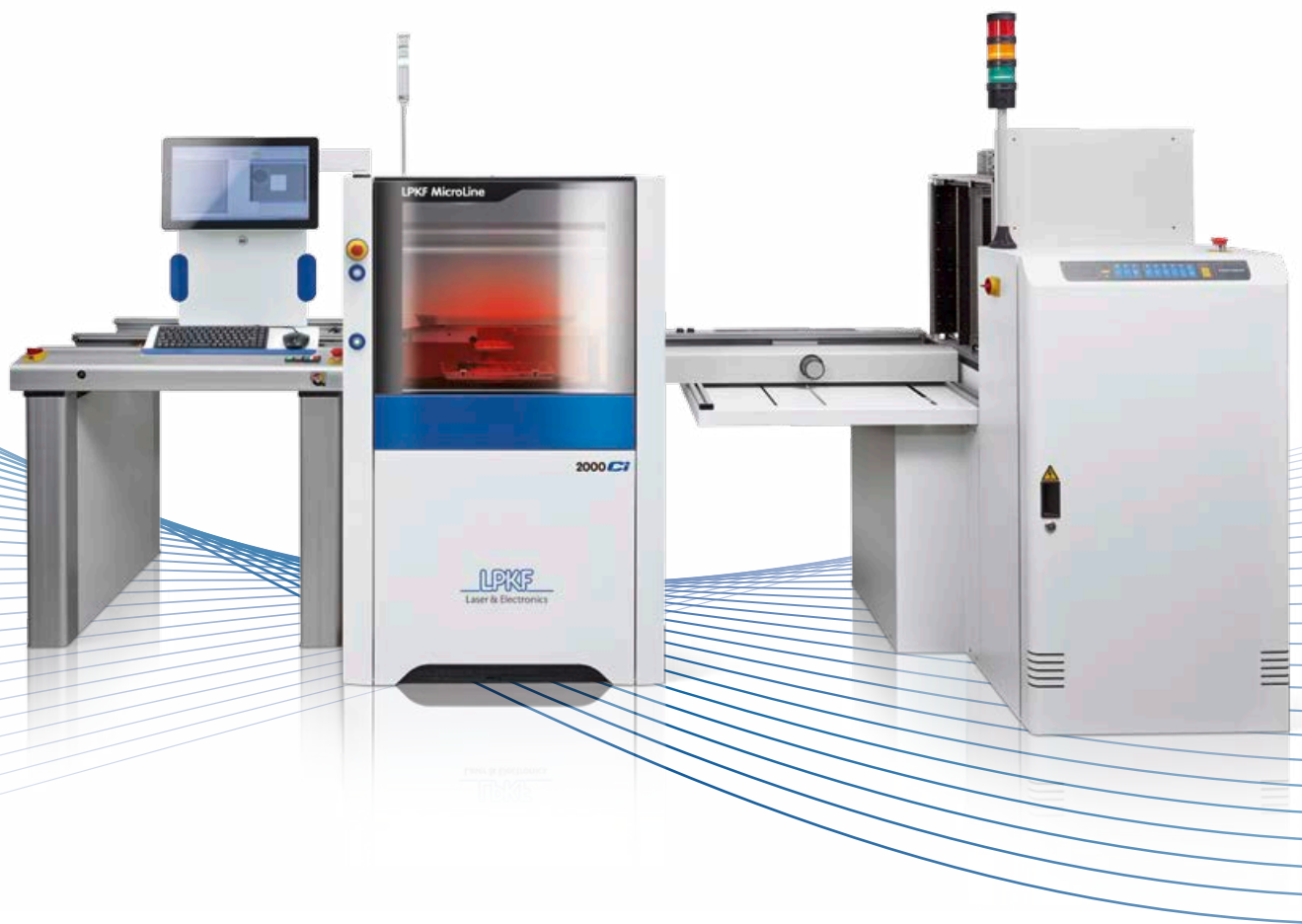


# Automated UV Laser for Depaneling of Rigid and Flexible PCBs

## LPKF MicroLine 2000 Ci



## Shorter Product Pipelines

Just click on the layout files instead of manufacturing expensive tools – that's how easy the LPKF MicroLine 2000 Ci can be employed to process different products. Users enjoy cutting edge competitive advantages thanks to the very high quality and flexible production planning. The MicroLine 2000 Ci systems are remarkably compact, easy to operate, with a very good price performance ratio – a welcome addition to the electronic production team.

Technical Data: LPKF MicroLine 2000 Ci	
<b>Laser class</b>	1
<b>Max. working area (X x Y x Z)</b>	300 mm x 250 mm x 11 mm (11.8" x 9.8" x 0.4")
<b>Max. recognition area (X x Y)</b>	300 mm x 250 mm (11.8" x 9.8")
<b>Max. Material Size</b>	300 mm x 250 mm (11.8" x 9.8")
<b>Data input formats</b>	Gerber, X-Gerber, DXF, HPGL, Sieb & Meier, Excellon, ODB ++
<b>Max. structuring speed</b>	Depends on application
<b>Positioning accuracy</b>	± 25 µm (1 mil)
<b>Diameter of focussed laser beam</b>	20 µm (0.8 mil)
<b>Laser wavelength</b>	355 nm
<b>System dimensions (W x H x D)</b>	875 mm x 1 530 mm x 1 300 mm (34.5" x 60.2" x 51.2")*
<b>Weight</b>	~ 450 kg (990 lbs)
<b>Operating conditions</b>	
<b>Power supply</b>	230 VAC, 50 – 60 Hz, 3 kVA
<b>Cooling</b>	Air-cooled (internal water-air cooling)
<b>Compressed air</b>	0.6 MPa (87 PSI)
<b>Ambient temperature</b>	22 °C ± 2 °C (72 °F ± 4 °F)
<b>Humidity</b>	< 60 % (non-condensing)
<b>Required accessories</b>	Exhaust unit, external conveyor, production fixture

\* Height incl. StatusLight = 2 020 mm (79.6")

**MicroLine 2000 Ci systems feature multiple variations: MicroLine 2120 Ci (10 watt laser source) and MicroLine 2820 Ci (15 watt laser source).**

### Worldwide (LPKF Headquarters)

LPKF Laser & Electronics AG Osteriede 7 30827 Garbsen Germany  
Phone +49 (5131) 7095-0 info@lpkf.com www.lpkf.com

### Japan

LPKF Laser & Electronics K.K. Japan  
Phone +81 (0) 3 5439 5906 info.japan@lpkf.com jp.lpkf.com

### North / Central America

LPKF Laser & Electronics North America  
Phone +1 (503) 454-4200 sales@lpkfusa.com www.lpkfusa.com

### South Korea

LPKF Laser & Electronics Korea Ltd.  
Phone +82 (31) 689 3660 info.korea@lpkf.com www.lpkf.com

### China

LPKF Tianjin Co., Ltd.  
Phone +86 (22) 2378-5318 sales@lpkf.cn www.lpkf.cn

LPKF Laser & Electronics AG sells and markets products and provides support in more than 50 countries. Find your local representative at [www.lpkf.com](http://www.lpkf.com).

### Hong Kong

LPKF Laser & Electronics (Hong Kong) Ltd.  
Phone +852-2545-4005 hongkong@lpkf.com www.lpkf.com



Made in Germany